



MARATHON
P O W E R

USER MANUAL

UPS Management Software

For Version 2.86

I. Operating System and Interface Specifications:

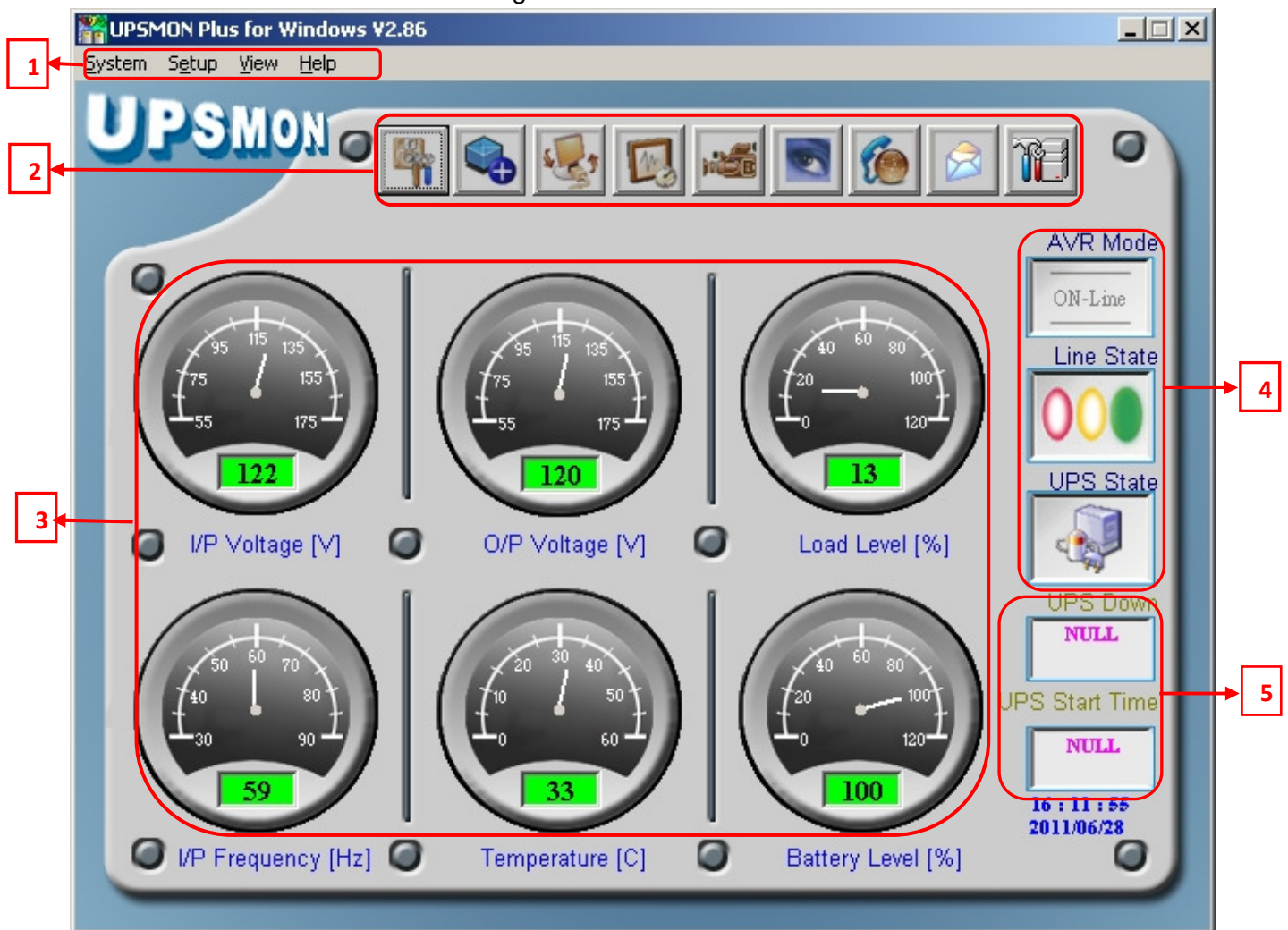
- a. O/S: Windows 95,98,Me,NT,2000,XP, Vista, Windows-7, Server 2003/2008, Novell Netware and Linux
- b. Comm Ports:
 - i. Windows: RS-232 on COM1, COM2, COM3, COM4 or USB.
 - ii. Linux: ttyS0 (COM1 of Unix) or ttyS1 (COM2 of Unix)

II. Installation and Setup:

- a. Plug one end of the supplied cable into the UPS. Plug the other end into one of the computer's COM or USB ports.
- b. Insert the installation CD into the CD-ROM drive and then execute *Setup.exe* to initiate the installation of the software. The CD is no longer necessary once the installation procedure has been completed.
(*Setup.exe* is also available via Marathon Power's Download Center at:
<http://marathon-power.com/EN/DownloadCenter/Software/V286/Setup.exe>)

III. Description of the Main Window Functions

Fig. 1 – The Main Window



1 The Menu Bar:

Access to all of the UPSMon monitoring software functions and features can be obtained through the items on the Menu Bar, as follows:

A. **System** - the System menu contains the following items:

- System Configuration
- Self Test

1. The *System Configuration* System menu item allows configuration of several UPS shutdown options, selection of shutdown type, control of the power outlets, status message setup, language selection, and selection of an automatic command file.

The options and settings provided are as follows

- a. 'Shutdown options':
 - Power Failure Windows Shutdown Delay (in seconds)
 - Battery limited capacity shutdown (in percentage)
 - Low battery shutdown (enabled or disabled)
 - UPS shutdown delay time (in minutes)
- b. 'Power outlets' setup (see Figure 2-B)
- c. 'Shutdown type':
 - Shut down
 - Hibernate
- d. 'Message setup' (see Figure 2-C)
- e. 'Select language' (12 languages are available):
 - English
 - Chinese (Traditional)
 - Chinese (Simple)
 - Japanese
 - Thai
 - German
 - French
 - Spanish
 - Korean
 - Polish
 - Turkish
 - Russian
- f. 'Execute Command File':

This allows the user to enter an executable file to launch on the host computer and time delay before command file is executed.

Fig. 2a – System Configuration

The 'System Configuration' dialog box contains several sections. A red box highlights the 'Shutdown Options' section, which includes the following settings:

- ☒ Power Failure Windows Shutdown Delay (sec) 300
- ☐ Battery limited capacity shutdown (%) 30
- ☒ Low battery shutdown
- ☒ UPS Shutdown Delay (min) 2

Below this section is the 'Outlet Setup' button, which is also highlighted with a red box and labeled 'Fig. 2b'. Further down is the 'Message Setup' section with a 'Setup' button labeled 'Fig. 2c'. At the bottom, there is a 'Select Language' dropdown set to 'English', and another red box highlights the 'Execute Command File' section with a file path field and a 'Time to Execute Command File (sec)' field set to 60. The dialog has 'OK' and 'Cancel' buttons at the bottom.

'Outlet Setup' provides control of the UPS power outlets as shown in Fig 2B. Controls include enabling/disabling the outlets. The Outlet 2 Setup section provides:

- Windows Shutdown Delay (in seconds)
- Battery capacity limit (in percentage)
- a Low battery shutdown function.
- UPS Shutdown Delay (in minutes)

Fig. 2b – Outlet Setup

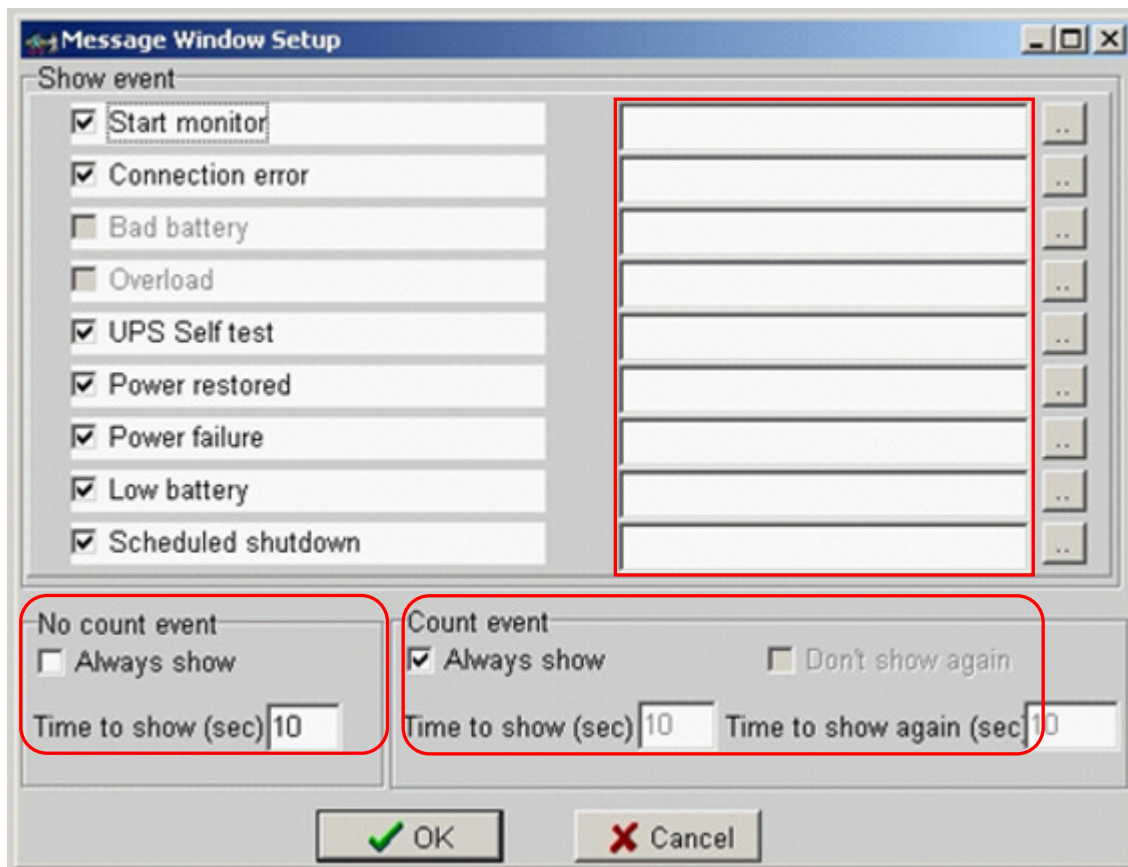
The 'Outlet Setup' dialog box has the following sections:

- ☐ Enable Multi Outlet Control
- Outlet 1: ON, Outlet 2: ON
- Main Outlet: Outlet 1
- Outlet 2 Setup section (highlighted with a red box):
 - ☒ Power Failure Windows Shutdown Delay (sec) 30
 - ☐ Battery limited capacity shutdown (%) 30
 - ☒ Low battery shutdown
 - ☒ UPS Shutdown Delay (min) 1

The dialog has 'OK' and 'Cancel' buttons at the bottom.

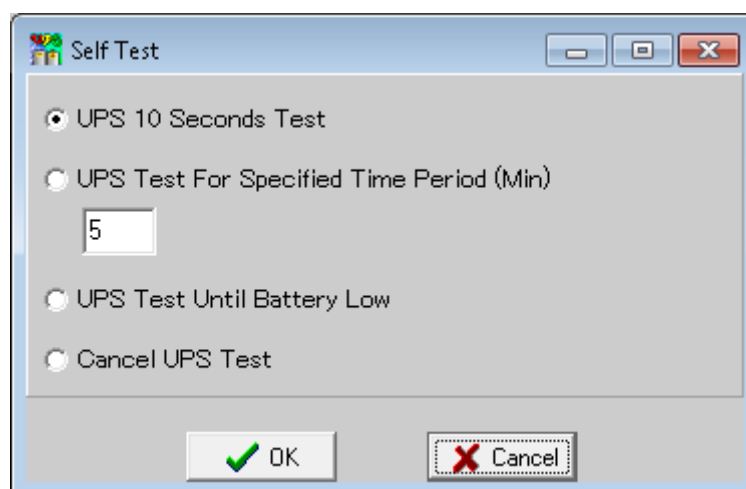
'Message Setup' allows entering a custom message *or* selecting a message file for each UPS event. Fig 2c shows enabling/disabling of events and message entry fields. Other Message Setup controls include enabling/disabling "Count" and "No count" events and their display times (in seconds):

Fig. 2c – Message Setup



2. The *Self Test* System menu item initiates a manual test of the UPS:

Fig. 3 - Self Test



B. Setup - the Setup menu contains the following seven items:

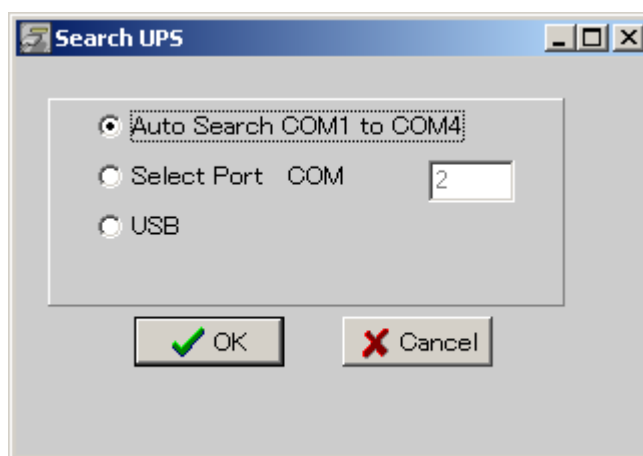
- COM Port
- Schedule
- Call Pager
- E-Mail
- UPS Setup
- Password Setup
- Green Mode Setup

1. The *COM Port* setup menu item is used by the UPSMon software to detect the serial communications port being utilized on the local machine.

Three selections are provided:

- Auto Select
- Select a specific COM port
- Select USB

Fig. 4– Select COM port



2. The *Schedule* setup menu item provides a calendaring page with selectable year, month and day parameters to schedule five different UPS actions on a Monthly, Weekly, Daily and 'Special Day' basis.

Schedulable items are: (See Fig. 5)

- a. Self Test
- b. Beep ON
- c. Beep OFF
- d. Startup
- e. Shutdown

Buttons along the bottom edge of the Schedule window allow Monthly, Weekly, and Daily schedule configuration. The 'Special Day' configuration is accessed by clicking a date directly on the calendar. Click "Message ON" at the bottom of the page to activate the 'calendar view' feature. Moving the mouse over any particular day will bring up the schedule for that day (shown as a memo). Click "Schedule time" at the bottom of the page to display time settings for each available action.

Fig. 5 – Schedule Setup.

Schedule Setup

Month Setup Weekly setup Daily setup Special day setup

2011 3

Sunday	Monday	Tuesday	Wednesday	Thursday	Friday	Saturday
		1	2	3	4	5
6	7	8	9	10	11	12
13	14	15	16	17	18	19
20	21	22	23	24	25	26
27	28	29	30	31		

Month Setup Weekly setup Daily setup Scheduled time Message Off Close

UPSMON Schedule Month Setup

1	2	3	4	5	6	7
8	9	10	11	12	13	14
15	16	17	18	19	20	21
22	23	24	25	26	27	28
29	30	31				

1

None	08:00	None	08:00
None	08:00	None	08:00
None	08:00	None	08:00
None	08:00	None	08:00

None
Self test
Beep ON
Beep OFF
Start up
Shutdown

OK Cancel

Special day setup

2011/03/17

None	08:00	None	08:00
None	08:00	None	08:00
None	08:00	None	08:00
None	08:00	None	08:00

OK Disable Setting Cancel

UPSMON Schedule Weekly Setup

Sunday Monday Tuesday Wednesday Thursday Friday Saturday

Sunday Setup

None	08:00	None	08:00
None	08:00	None	08:00
None	08:00	None	08:00
None	08:00	None	08:00

OK Cancel

UPSMON Schedule Daily Setup

None	08:00	None	08:00
None	08:00	None	08:00
None	08:00	None	08:00
None	08:00	None	08:00

None
Self test
Beep ON
Beep OFF
Start up
Shutdown

OK Cancel

3. The *Call Pager* setup menu item allows the entry of telephone numbers to be dialed whenever any of nine UPS events occur. Selection of a COM used by an external modem is also provided:

Fig. 6 – Pager Setup.

Message Type	Dial Number
Start monitor	
Connection error	
Power failure	0123456789,,, #000*01#
Low battery	
Power restored	0123456789,,, #000*02#
Overload	
Bad battery	0123456789,,, #000*03#
UPS Shutdown	
Scheduled shutdown	

Modem Port Setup: Disabled [v] [OK] [Cancel]

The format for the dialed-number string in the figure above is as follows:

1. <0123456789> is the Pager number to be dialed.
2. <,,,> By default, each comma represents a two-second delay. The delay time can be changed. In the figure, modem is instructed to wait for 6 seconds.
3. <#000*01#> is the Message to be displayed. This setting can be customized.

4. The *E-Mail* setup menu item is similar to the Call Pager function above, but will transmit an e-mail message to a recipient rather than a page. The E-Mail setup provides fourteen different UPS events that can be selected to trigger transmission of an e-mail message.

An e-mail message can be triggered by any of the following events:

- | | |
|--------------------|------------------------|
| 1. Program Startup | 2. Program Stopped |
| 3. Start Monitor | 4. Connection Error |
| 5. System Shutdown | 6. Power Failure |
| 7. Low Battery | 8. Power Restored |
| 9. UPS Shutdown | 10. Overload |
| 11. Bad Battery | 12. Scheduled Shutdown |
| 13. Self Test | 14. Other |

Standard configurable e-mail client parameters include:

- Message headers:** "Send To:" and "Subject:"
- Host:** SMTP server address, user login ID and Secure Password Authentication.
- Message text:** A separate message is allowed for each event type.
- Sender:** Sender's name and email address.

Fig. 7 – E-Mail Setup.

Event Type	Message
8. Power restored	
9. UPS shutdown	
10. Overload	
11. Bad battery	
12. Scheduled shutdown	
13. UPS Self test	
14. Other	

5. The *UPS Setup* setup menu item appears **only** when a Vault series UPS is connected via serial or USB port. It permits setting limits or selecting modes for eleven different UPS functions, as follows:

<u>UPS Function</u>	<u>Function Settings</u>
1. Output Voltage setting	<ul style="list-style-type: none"> • 100v • 110v • 115v • 120v • 127v
2. Input Frequency setting	<ul style="list-style-type: none"> • 2% • 5% • 7%
3. Input Bypass setting	<ul style="list-style-type: none"> • +10% to -10% • +10% to -15% • +15% to -20%
4. Free Run mode setting	<ul style="list-style-type: none"> • Free Run mode OFF • Free Run mode ON - Bypass Enable • Free Run mode ON - Bypass Disable
5. High Efficiency mode setting	<ul style="list-style-type: none"> • 10% • 15% • High Efficiency mode OFF
6. Manual Bypass setting	<ul style="list-style-type: none"> • Manual Bypass setting • Normal mode
7. Silence setting	<ul style="list-style-type: none"> • ON • OFF
8. Generator setting	<ul style="list-style-type: none"> • ON • OFF
9. Battery Cabinet setting	<ul style="list-style-type: none"> • Battery Cabinet 00 Pack • Battery Cabinet 01 Pack • Battery Cabinet 02 Pack
10. Language setting	<ul style="list-style-type: none"> • English • French • Italian • German • Spanish
11. Site Fault setting	<ul style="list-style-type: none"> • ON • OFF
NOTE: The UPS firmware version is also displayed on the main UPS Setup screen.	

Fig. 8a – UPS Setup

UPS Function Setting

Output Voltage setting	Setup	Input Frequency setting	Setup
Input Bypass setting	Setup	Free Run mode setting	Setup
High Efficiency mode setting	Setup	Manual Bypass setting	Setup
Silence setting	Setup	Generator setting	Setup
Battery Cabinet setting	Setup	Language setting	Setup
Site Fault setting	Setup	UPS Firmware Version	Model 1500 Ver 02.9B

OK Cancel

Fig. 8b – UPS Setup sub-screens

UPS setup Output Voltage setting

Output Voltage setting

☐ 100 V ☐ 110 V

☐ 115 V ☒ 120 V

☐ 127 V

OK Cancel

UPS setup Input Frequency setting

Input Frequency setting

☐ 2 % ☒ 5 %

☐ 7 %

OK Cancel

UPS setup Input Bypass setting

Input Bypass setting

☐ +10 % -10 % ☒ +10 % -15 %

☐ +15 % -20 %

OK Cancel

UPS setup Input Frequency setting

Input Frequency setting

☐ 2 % ☒ 5 %

☐ 7 %

OK Cancel

UPS setup Hight Efficiency mode setting

Hight Efficiency mode setting

☐ 10 % ☐ 15 %

☒ High Efficiency mode OFF

OK Cancel

UPS setup Manual Bypass setting

Manual Bypass setting

☐ Manual Bypass mode ☒ Normal mode

OK Cancel

UPS setup Silence setting

Silence setting

☐ ON ☒ OFF

OK Cancel

UPS setup Generator setting

Generator setting

☐ ON ☒ OFF

OK Cancel

UPS setup Battery Cabinet setting

Battery Cabinet setting

☒ Battery Cabinet 00 Pack ☐ Battery Cabinet 01 Pack

☐ Battery Cabinet 02 Pack

OK Cancel

UPS setup Language setting

Language setting

☒ English ☐ German

☐ French ☐ Spanish

☐ Italian

OK Cancel

UPS setup Site Fault setting

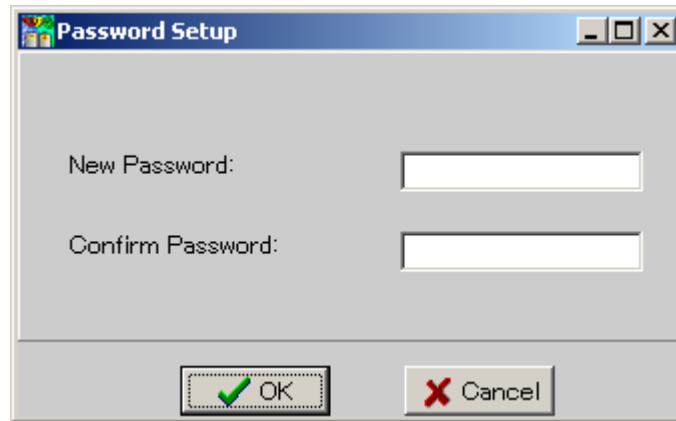
Site Fault setting

☐ ON ☒ OFF

OK Cancel

6. The *Password Setup* setup item allows running the UPSMon software to be password protected:

Fig. 9 – Password Setup

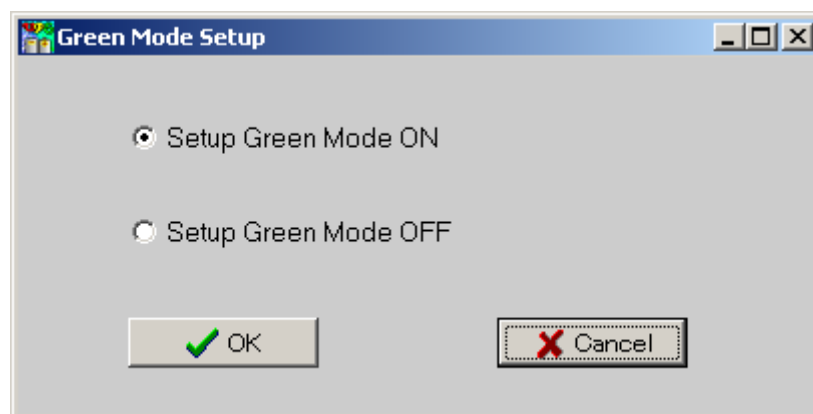


7. The *Green Mode Setup* setup item permits turning 'green' mode on or off:

While the UPS is discharging with zero load : To save the battery capacity, the UPS will automatically turn the output voltage off in a period of time. Then the output voltage will not turn on until the utility is restored.

- Setup Green Mode ON : Enable this function to support the Green Mode.
- Setup Green Mode OFF : Disable this function.

Fig. 10 – Green Mode Setup



NOTE: Some types of the UPS do not provide this function.

C. View - the View menu contains the following items:

- Record Viewer
- Event Viewer

1. The *Record Viewer* allows chart-recording of seven UPS monitored measurements, as well as the “playback” and viewing of the data for a span of 12 months.

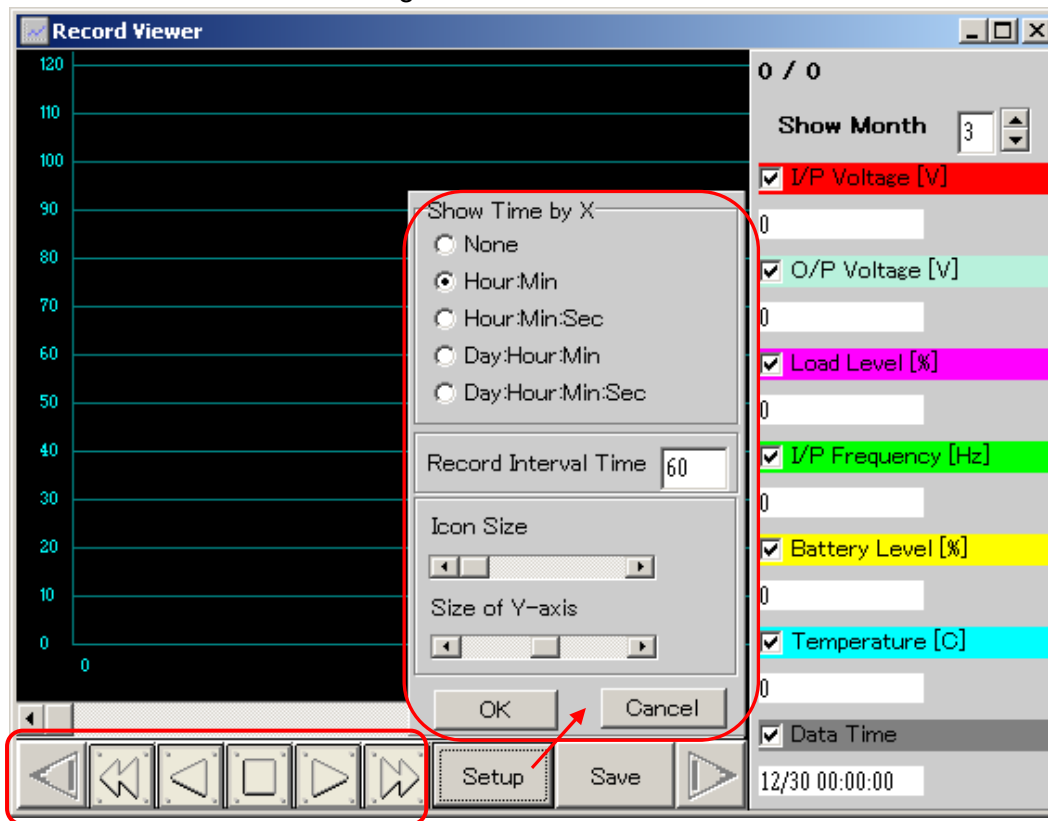
Recording enable/disable is available for the following data:

1. Input Voltage (in Volts)
2. Output Voltage (in Volts)
3. Load Level (in Percent)
4. Input Frequency (in Hertz)
5. Battery Level (in Percent)
6. Temperature (in degrees Centigrade)
7. Data Timestamp (Format: M/D hh:mm:ss)

The Setup button at the bottom of the Record Viewer window permits the selection of:

- i. Timestamp format displayed along the X-axis.
- ii. The data sample record time interval.
- iii. The displayed icon size.
- iv. Y-axis display size.

Fig. 11 – Record Viewer.



The Toolbar along the bottom of the Record Viewer also contains control buttons that allow the user to advance or reverse through the displayed data.

2. The *Event View* displays data from the UPS event log.

There are *fifteen* events that can be enabled/disabled.

ALL events can be selected for display, or a range of events can be specified via a Starting year and month and an Ending year and month.

Displayable events are:

- | | | |
|---------------------|-------------------|------------------------|
| 1. Program Startup | 6. Power Failure | 11. Bad Battery |
| 2. Program Stopped | 7. Low Battery | 12. Scheduled Startup |
| 3. Start Monitor | 8. Power Restored | 13. Scheduled Shutdown |
| 4. Connection Error | 9. UPS Shutdown | 14. Self Test |
| 5. System Shutdown | 10. Overload | 15. Other |

Fig. 12 – Event Viewer

The screenshot shows a window titled "Event Log" with a table of events and a selection grid below it.

NO.	Type	Time	Event
1	1	06/23/2011 17:56:48	Program startup
2	3	06/23/2011 18:00:04	Start monitor
3	2	06/23/2011 18:00:14	Program stopped
4	1	06/24/2011 00:06:28	Program startup
5	2	06/24/2011 00:08:45	Program stopped
6	1	06/24/2011 00:08:53	Program startup
7	2	06/24/2011 00:09:29	Program stopped
8	1	06/24/2011 00:11:24	Program startup
9	3	06/24/2011 10:04:52	Start monitor
10	4	06/24/2011 10:05:20	Connection error

<input checked="" type="checkbox"/> 1. Program startup	<input checked="" type="checkbox"/> 6. Power failure	<input checked="" type="checkbox"/> 11. Bad battery
<input checked="" type="checkbox"/> 2. Program stopped	<input checked="" type="checkbox"/> 7. Low battery	<input checked="" type="checkbox"/> 12. Scheduled started
<input checked="" type="checkbox"/> 3. Start monitor	<input checked="" type="checkbox"/> 8. Power restored	<input checked="" type="checkbox"/> 13. Scheduled shutdown
<input checked="" type="checkbox"/> 4. Connection error	<input checked="" type="checkbox"/> 9. UPS shutdown	<input checked="" type="checkbox"/> 14. UPS Self test
<input type="checkbox"/> 5. System shutdown	<input checked="" type="checkbox"/> 10. Overload	<input type="checkbox"/> 15. Other

☒ All Start Year/Month: 2011 6 End Year/Month: 2011 6 Save

Events displayed in the Event Viewer window are sequenced top to bottom in the order of their occurrence with: event number, the type number, the date/timestamp and the event name.

D. *Help* - the Help menu contains the a link to the UPSMon ReadMe document

The ReadMe document is an HTML file that is store in the default UPSMon install directory. The typical directory path to the ReadMe on a Windows machine in the U.S. is: *C:\Program Files\UPSMON\Help\ReadmeE\ReadMeE.htm*

The *C:\Program Files\UPSMON\Help* directory contains folders for 11 other languages with a ReadMe doc in each language.

The ReadMe document contains more information about:

- Using the UPSMON-Plus Monitoring Software
- Opening the UPSMON-Plus UPS Monitoring software
- UPSMON-Plus buttons and indicators
- Setting up the UPSMON-Plus configuration
- Configuring the E-mail notification feature
- Checking the Event List and Event Graph
- Scheduling UPSMON-Plus events
- UPSMON-Plus self test
- UPSMON-Plus Green Mode
- UPSMon messages
- Setting up the PC BIOS to enable PC startup

2 The Tool Bar:

The UPSMon version 2.86 has nine buttons in the tool bar located near the top of the Main page:



These buttons repeat several of the menu items described in [1](#) section above. Refer to that section for descriptions of the functions of the following buttons:

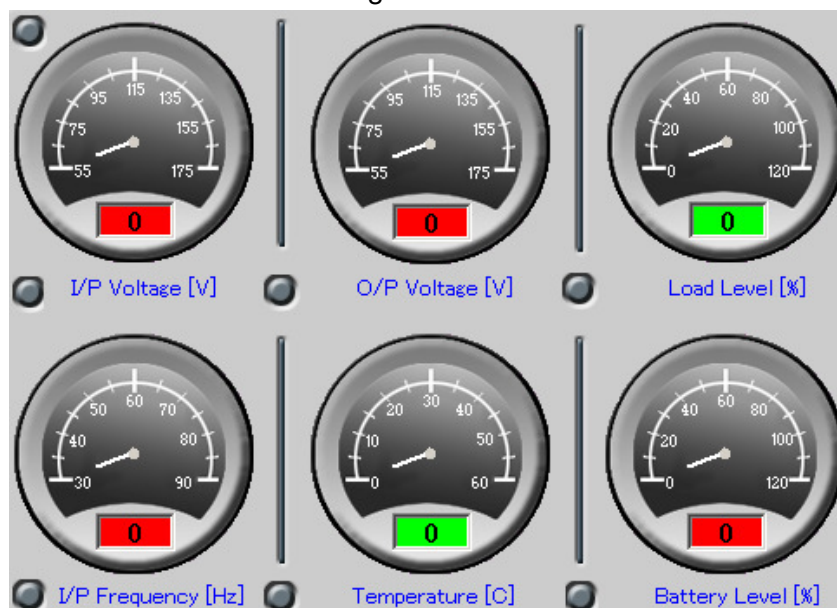
- System Configuration [Section 1-A-1]
- Self Test [Section 1-A-2]
- COM Port [Section 1-B-1]
- Schedule [Section 1-B-2]
- Record Viewer [Section 1-C-1]
- Event Viewer [Section 1-C-2]
- Call Pager [Section 1-B-3]
- E-Mail [Section 1-B-4]
- UPS Setup [Section 1-B-5] (Button appears when a Vault UPS is connected to PC.)

3 The Meters:

The Meters display provides scaled and numeric readings for each of the following items:

- Input Voltage, (in Volts)
- Output Voltage, (in Volts)
- Load Level, (in percentage)
- Input Frequency, (in Hertz)
- Temperature, (in degrees Centigrade)
- Battery Level, (in percentage)

Fig. 14 – The Meters.



UPS Status Indicators:

Three UPS status indicators are located along the right-side of the Main page:

- AVR Mode
- Line State
- UPS State

1. AVR (Automatic Voltage Regulator) Mode:

The AVR Mode indicator can display four different states, as shown in Figure 15:

Fig. 15 – AVR Mode indicator states.

- Normal
- AVR
- AVR-Boost
- AVR-Buck

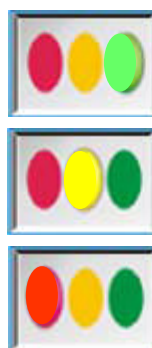


2. Line State:

Indicates the current state of the power source, as shown in Figure 16:

Fig. 16 – Line Status indicator states.


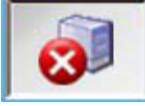

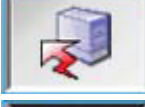
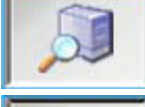

- Normal
- Line failure
- Battery low



3. UPS State:

Indicates one of five current UPS states, as shown in Figure 17:

Fig. 17 – UPS Status indicator states.

- Normal 
- UPS fault 
- Battery fault 
- Over load 
- UPS test 
- UPS off 

5

Scheduled Shutdown Indicators:

The “*UPS Down Time*” and the “*UPS Up Time*” indicators are located on the lower-right side of the Main page.

When a UPS shutdown and restart is configured using the procedure in Section 1-B-2 above, these indicators will display the shutdown and restart times:

Fig. 18 – The Scheduled Shutdown indicators.

Next Scheduled Shutdown:

Indicates UPS when the next scheduled shutdown is set to occur.

UPS Down Time
2007/09/14
12 : 00

Next Scheduled Start up:

Indicates UPS when the next scheduled start up is set to occur.

UPS Start Time
2007/09/14
13 : 30

