



MARATHON
P O W E R

USER MANUAL

UPS Management Software

For Version 2.89m3

I. Operating System and Interface Specifications:

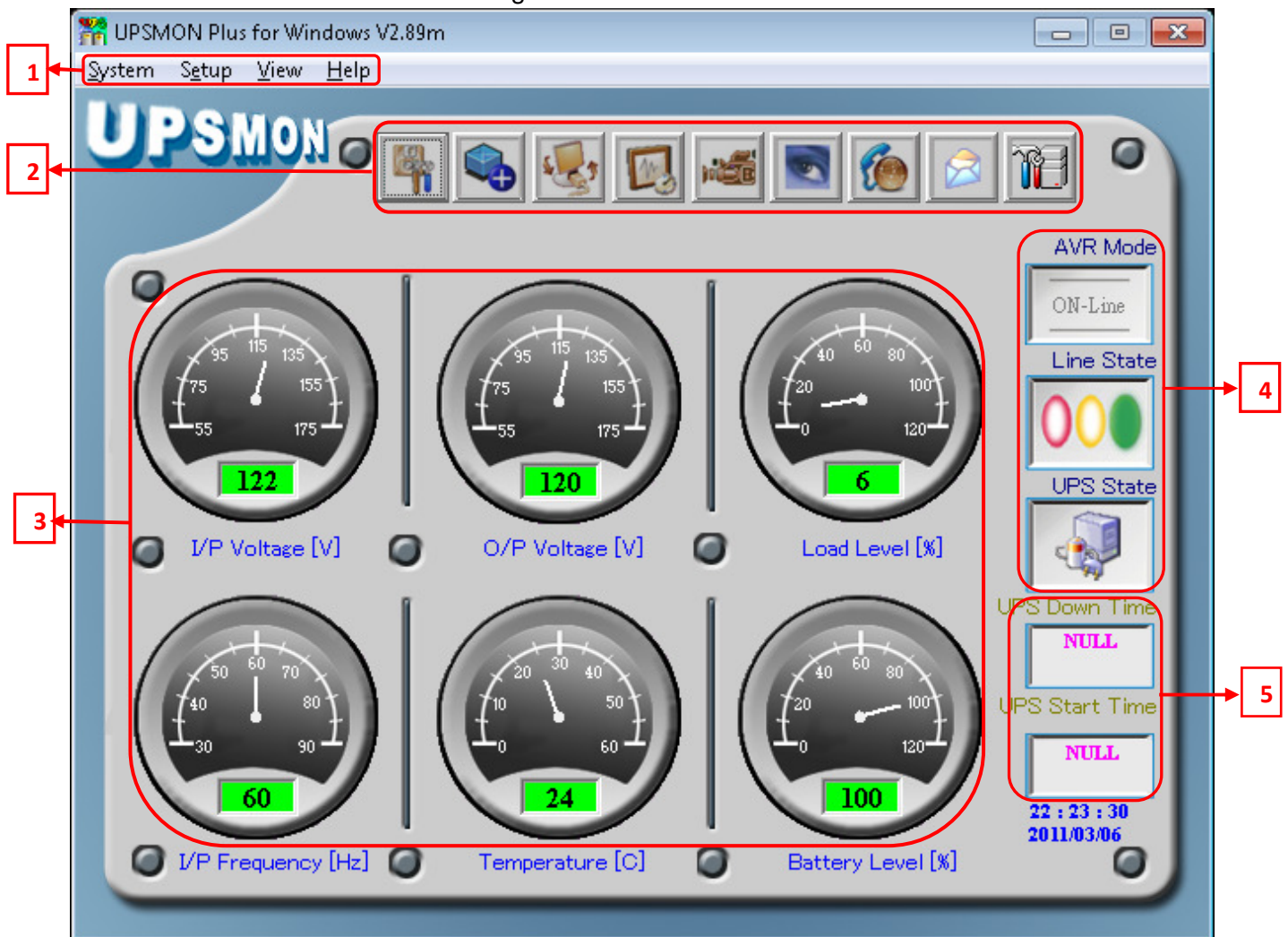
- a. O/S: Windows 95,98,Me,NT,2000,XP, Vista, Windows-7, Server 2003/2008, Novell Netware and Linux
- b. Comm Ports:
 - i. Windows: RS-232 on COM1, COM2, COM3, COM4 or USB.
 - ii. Linux: ttyS0 (COM1 of Unix) or ttyS1 (COM2 of Unix)

II. Installation and Setup:

- a. Plug one end of the supplied cable into the UPS. Plug the other end into one of the computer's COM or USB ports.
- b. Insert the installation CD into the CD-ROM drive and then execute *Setup.exe* to initiate the installation of the software. The CD is no longer necessary once the installation procedure has been completed.
(*Setup.exe* is also available via Marathon Power's Download Center at:
<http://marathon-power.com/EN/DownloadCenter/Software/V286/Setup.exe>)

III. Description of the Main Window Functions

Fig. 1 – The Main Window



1 The Menu Bar:

Access to all of the UPSMon monitoring software functions and features can be obtained through the items on the Menu Bar, as follows:

A. **System** - the System menu contains the following items:

- System Configuration
- Self Test

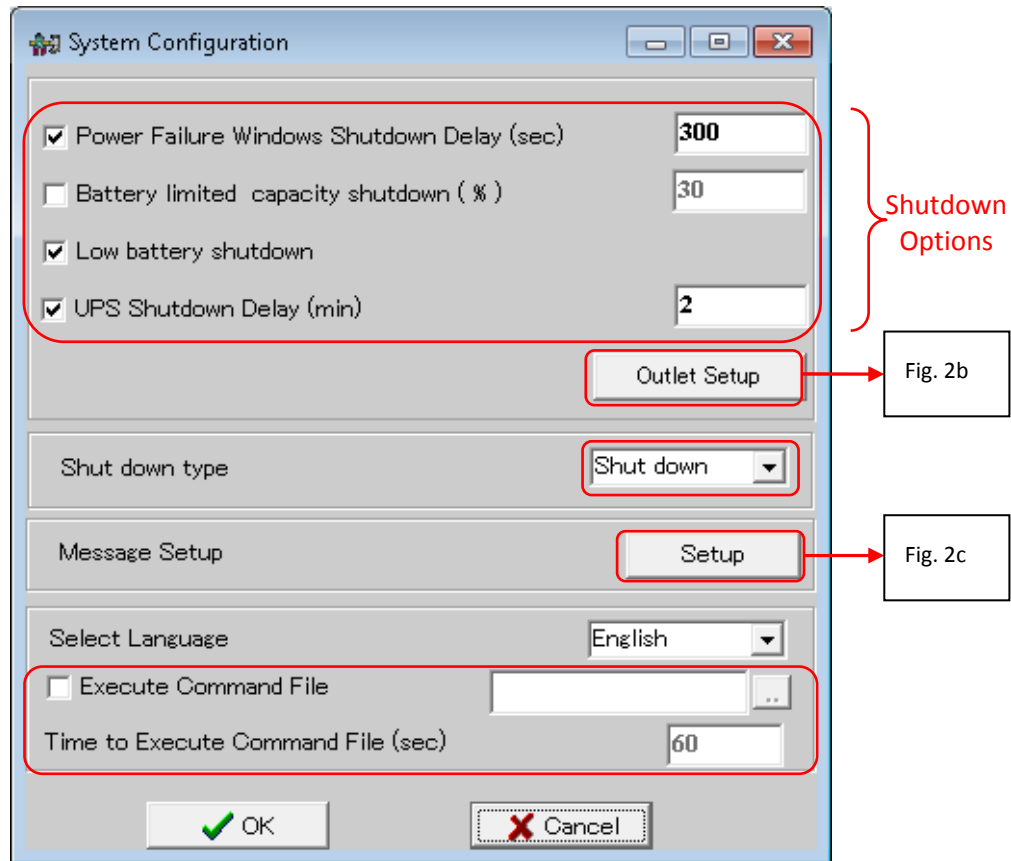
1. The *System Configuration* System menu item allows configuration of several UPS shutdown options, selection of shutdown type, control of the power outlets, status message setup, language selection, and selection of an automatic command file.

The options and settings provided are as follows

- a. 'Shutdown options':
 - Power Failure Windows Shutdown Delay (in seconds)
 - Battery limited capacity shutdown (in percentage)
 - Low battery shutdown (enabled or disabled)
 - UPS shutdown delay time (in minutes)
- b. 'Power outlets' setup (see Figure 2-B)
- c. 'Shutdown type':
 - Shut down
 - Hibernate
- d. 'Message setup' (see Figure 2-C)
- e. 'Select language' (12 languages are available):
 - English
 - Chinese (Traditional)
 - Chinese (Simple)
 - Japanese
 - Thai
 - German
 - French
 - Spanish
 - Korean
 - Polish
 - Turkish
 - Russian
- f. 'Execute Command File':

This allows the user to enter an executable file to launch on the host computer and time delay before command file is executed.

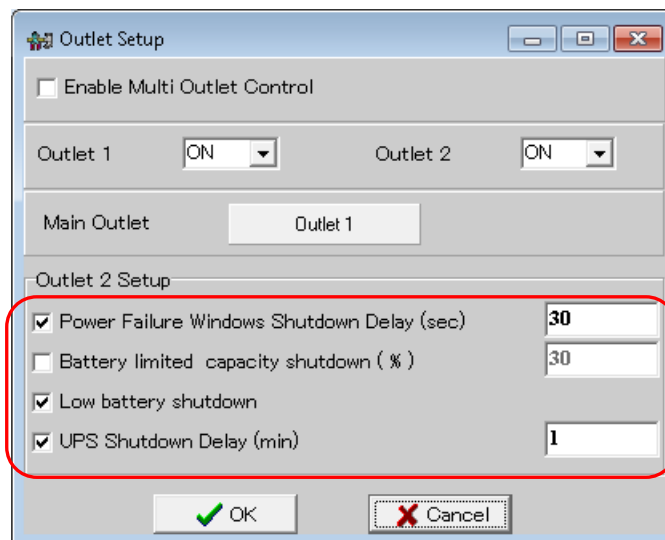
Fig. 2a – System Configuration



'Outlet Setup' provides control of the UPS power outlets as shown in Fig 2B. Controls include enabling/disabling the outlets. The Outlet 2 Setup section provides:

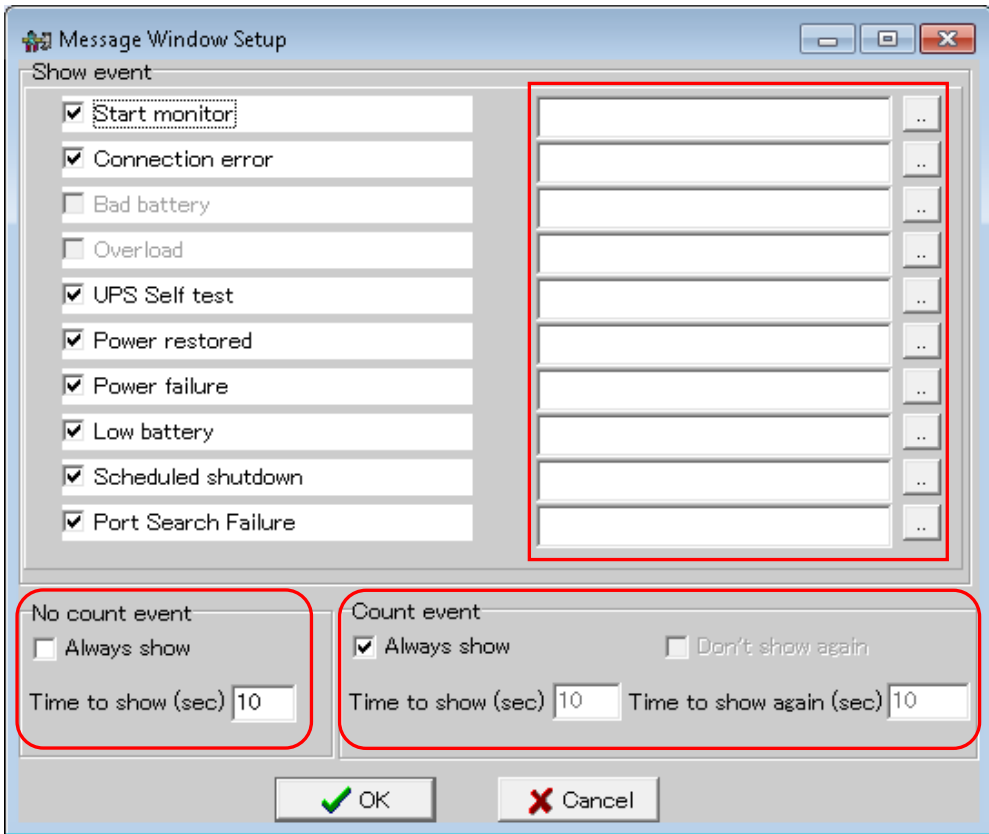
- Windows Shutdown Delay (in seconds)
- Battery capacity limit (in percentage)
- a Low battery shutdown function.
- UPS Shutdown Delay (in minutes)

Fig. 2b – Outlet Setup



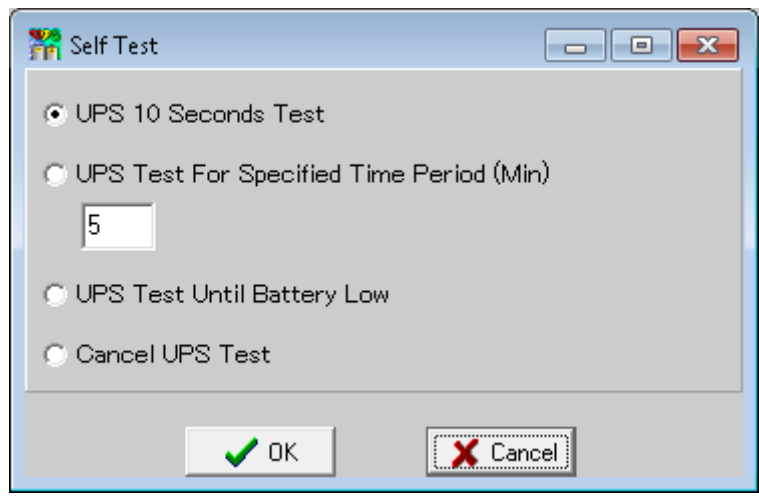
'Message Setup' allows entering a custom message *or* selecting a message file for each UPS event. Fig 2c shows enabling/disabling of events and message entry fields. Other Message Setup controls include enabling/disabling "Count" and "No count" events and their display times (in seconds):

Fig. 2c – Message Setup



2. The *Self Test* System menu item initiates a manual test of the UPS:

Fig. 3 - Self Test



B. Setup - the Setup menu contains the following seven items:

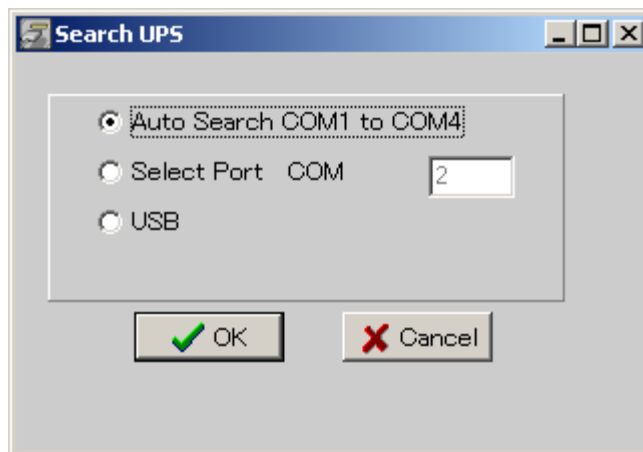
- COM Port
- Schedule
- Call Pager
- E-Mail
- UPS Setup
- Password Setup
- Green Mode Setup

1. The *COM Port* setup menu item is used by the UPSMon software to detect the serial communications port being utilized on the local machine.

Three selections are provided:

- Auto Select
- Select a specific COM port
- Select USB

Fig. 4– Select COM port



2. The *Schedule* setup menu item provides a calendaring page with selectable year, month and day parameters to schedule five different UPS actions on a Monthly, Weekly, Daily and 'Special Day' basis.

Schedulable items are: (See Fig. 5)

- a. Self Test
- b. Beep ON
- c. Beep OFF
- d. Startup
- e. Shutdown

Buttons along the bottom edge of the Schedule window allow Monthly, Weekly, and Daily schedule configuration. The 'Special Day' configuration is accessed by clicking a date directly on the calendar. Click "Message ON" at the bottom of the page to activate the 'calendar view' feature. Moving the mouse over any particular day will bring up the schedule for that day (shown as a memo). Click "Schedule time" at the bottom of the page to display time settings for each available action.

Fig. 5 – Schedule Setup.

Schedule Setup

Month Setup Weekly setup Daily setup Special day setup

2011 3

| Sunday | Monday | Tuesday | Wednesday | Thursday | Friday | Saturday |
|--------|--------|---------|-----------|----------|--------|----------|
| | | 1 | 2 | 3 | 4 | 5 |
| 6 | 7 | 8 | 9 | 10 | 11 | 12 |
| 13 | 14 | 15 | 16 | 17 | 18 | 19 |
| 20 | 21 | 22 | 23 | 24 | 25 | 26 |
| 27 | 28 | 29 | 30 | 31 | | |

Month Setup Weekly setup Daily setup Scheduled time Message Off Close

UPSMON Schedule Month Setup

| | | | | | | |
|----|----|----|----|----|----|----|
| 1 | 2 | 3 | 4 | 5 | 6 | 7 |
| 8 | 9 | 10 | 11 | 12 | 13 | 14 |
| 15 | 16 | 17 | 18 | 19 | 20 | 21 |
| 22 | 23 | 24 | 25 | 26 | 27 | 28 |
| 29 | 30 | 31 | | | | |

1

| | | | |
|------|-------|------|-------|
| None | 08:00 | None | 08:00 |
| None | 08:00 | None | 08:00 |
| None | 08:00 | None | 08:00 |
| None | 08:00 | None | 08:00 |

- None
- Self test
- Beep ON
- Beep OFF
- Start up
- Shutdown

OK Cancel

Special day setup

2011/03/17

| | | | |
|------|-------|------|-------|
| None | 08:00 | None | 08:00 |
| None | 08:00 | None | 08:00 |
| None | 08:00 | None | 08:00 |
| None | 08:00 | None | 08:00 |

OK Disable Setting Cancel

UPSMON Schedule Weekly Setup

Sunday Monday Tuesday Wednesday Thursday Friday Saturday

Sunday Setup

| | | | |
|------|-------|------|-------|
| None | 08:00 | None | 08:00 |
| None | 08:00 | None | 08:00 |
| None | 08:00 | None | 08:00 |
| None | 08:00 | None | 08:00 |

OK Cancel

UPSMON Schedule Daily Setup

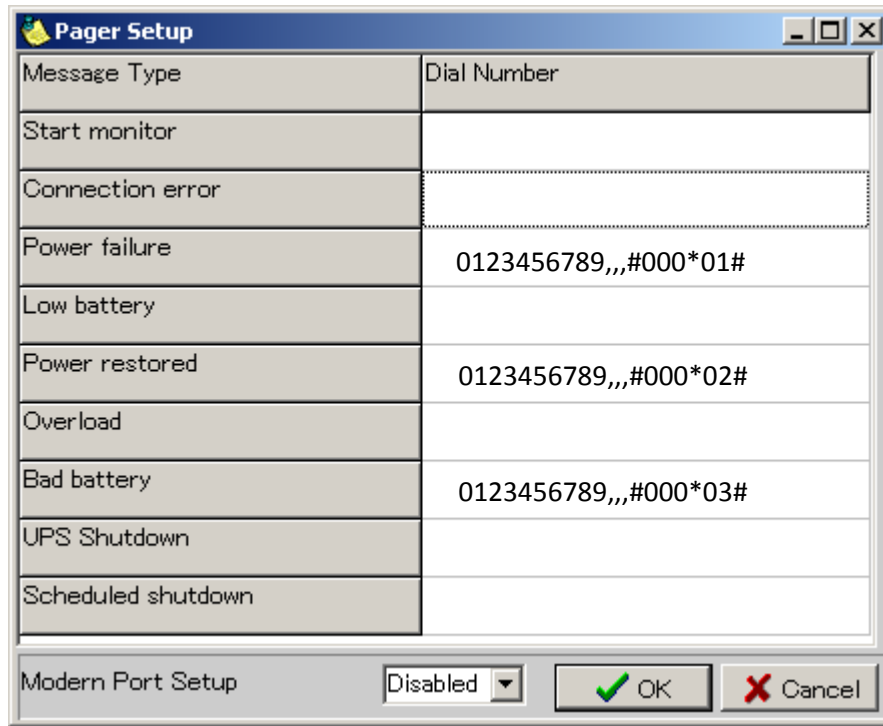
| | | | |
|------|-------|------|-------|
| None | 08:00 | None | 08:00 |
| None | 08:00 | None | 08:00 |
| None | 08:00 | None | 08:00 |
| None | 08:00 | None | 08:00 |

- None
- Self test
- Beep ON
- Beep OFF
- Start up
- Shutdown
- None

OK Cancel

3. The *Call Pager* setup menu item allows the entry of telephone numbers to be dialed whenever any of *nine* UPS events occur. Selection of a COM Port used by an external modem is also provided:

Fig. 6 – Pager Setup.



The format for the dialed-number string in the figure above is as follows:

1. <0123456789> is the Pager number to be dialed.
2. <,,,> By default, each comma represents a two-second delay. The delay time can be changed. In the figure, modem is instructed to wait for 6 seconds.
3. <#000*01#> is the Message to be displayed. This setting can be customized.

4. The *E-Mail* setup menu item is similar to the Call Pager function above, but will transmit an e-mail message to a recipient rather than a page. The E-Mail setup provides fourteen different UPS events that can be selected to trigger transmission of an e-mail message.

An e-mail message can be triggered by any of the following events:

- | | |
|--------------------|-------------------------|
| 1. Program Startup | 2. Program Stopped |
| 3. Start Monitor | 4. Connection Error |
| 5. System Shutdown | 6. Power Failure |
| 7. Low Battery | 8. Power Restored |
| 9. UPS Shutdown | 10. Overload |
| 11. Bad Battery | 12. Scheduled Shutdown |
| 13. Self Test | 14. Port Search Failure |

Standard configurable e-mail client parameters include:

- Message headers:** "Send To:" and "Subject:"
- Host:** SMTP server address, user login ID and Secure Password Authentication.
- Message text:** A separate message is allowed for each event type.
- Sender:** Sender's name and email address.

Fig. 7 – E-Mail Setup.

| Event Type | Message |
|---------------------|---------|
| 1. Program startup | |
| 2. Program stopped | |
| 3. Start monitor | |
| 4. Connection error | |
| 5. System shutdown | |
| 6. Power failure | |
| 7. Low battery | |

5. The *UPS Setup* setup menu item appears *only* when a Vault series UPS is connected via serial or USB port. It permits setting limits or selecting modes for eleven different UP functions, as follows:

| UPS Function | Function Settings |
|---|--|
| 1. Output Voltage setting | <ul style="list-style-type: none"> • 100v • 110v • 115v • 120v • 127v |
| 2. Input Frequency setting | <ul style="list-style-type: none"> • 2% • 5% • 7% |
| 3. Input Bypass setting | <ul style="list-style-type: none"> • +10% to -10% • +10% to -15% • +15% to -20% |
| 4. Free Run mode setting | <ul style="list-style-type: none"> • Free Run mode OFF • Free Run mode ON - Bypass Enable • Free Run mode ON - Bypass Disable |
| 5. High Efficiency mode setting | <ul style="list-style-type: none"> • 10% • 15% • High Efficiency mode OFF |
| 6. Manual Bypass setting | <ul style="list-style-type: none"> • Manual Bypass setting • Normal mode |
| 7. Silence setting | <ul style="list-style-type: none"> • ON • OFF |
| 8. Generator setting | <ul style="list-style-type: none"> • ON • OFF |
| 9. Battery Cabinet setting | <ul style="list-style-type: none"> • Battery Cabinet 00 Pack • Battery Cabinet 01 Pack • Battery Cabinet 02 Pack |
| 10. Language setting | <ul style="list-style-type: none"> • English • French • Italian • German • Spanish |
| 11. Site Fault setting | <ul style="list-style-type: none"> • ON • OFF |
| NOTE: The UPS firmware version is also displayed on the main UPS Setup screen. | |

Fig. 8a – UPS Setup

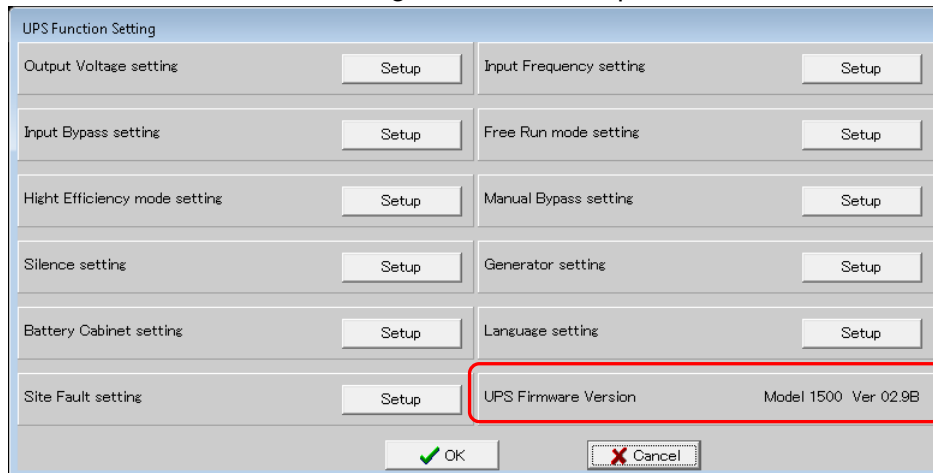


Fig. 8b – UPS Setup sub-screens

UPS setup Output Voltage setting

Output Voltage setting

100 V 110 V
 115 V 120 V
 127 V

UPS setup Input Frequency setting

Input Frequency setting

2 % 5 %
 7 %

UPS setup Input Bypass setting

Input Bypass setting

+10 % -10 % +10 % -15 %
 +15 % -20 %

UPS setup Input Frequency setting

Input Frequency setting

2 % 5 %
 7 %

UPS setup High Efficiency mode setting

High Efficiency mode setting

10 % 15 %
 High Efficiency mode OFF

UPS setup Manual Bypass setting

Manual Bypass setting

Manual Bypass mode Normal mode

UPS setup Silence setting

Silence setting

ON OFF

UPS setup Generator setting

Generator setting

ON OFF

UPS setup Battery Cabinet setting

Battery Cabinet setting

Battery Cabinet 00 Pack Battery Cabinet 01 Pack
 Battery Cabinet 02 Pack

UPS setup Language setting

Language setting

English German
 French Spanish
 Italian

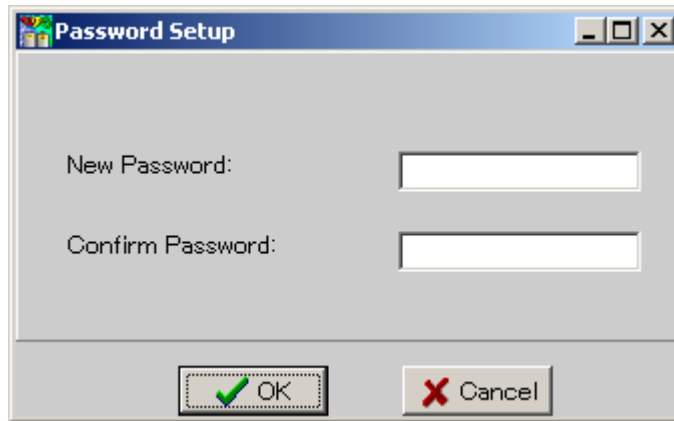
UPS setup Site Fault setting

Site Fault setting

ON OFF

6. The *Password Setup* setup item allows running the UPSMon software to be password protected:

Fig. 9 – Password Setup

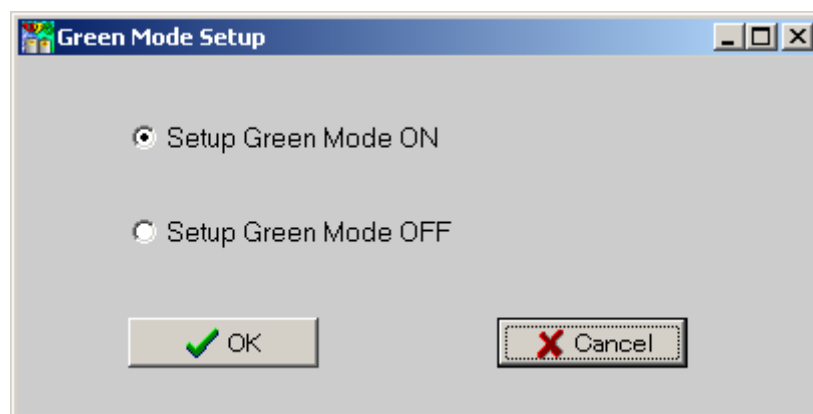


7. The *Green Mode Setup* setup item permits turning 'green' mode on or off:

While the UPS is discharging with zero load : To save the battery capacity, the UPS will automatically turn the output voltage off in a period of time. Then the output voltage will not turn on until the utility is restored.

- Setup Green Mode ON : Enable this function to support the Green Mode.
- Setup Green Mode OFF : Disable this function.

Fig. 10 – Green Mode Setup



NOTE: Some types of the UPS do not provide this function.

C. View - the View menu contains the following items:

- Record Viewer
- Event Viewer

1. The *Record Viewer* allows chart-recording of seven UPS monitored measurements, as well as the “*playback*” and viewing of the data for a span of 12 months.

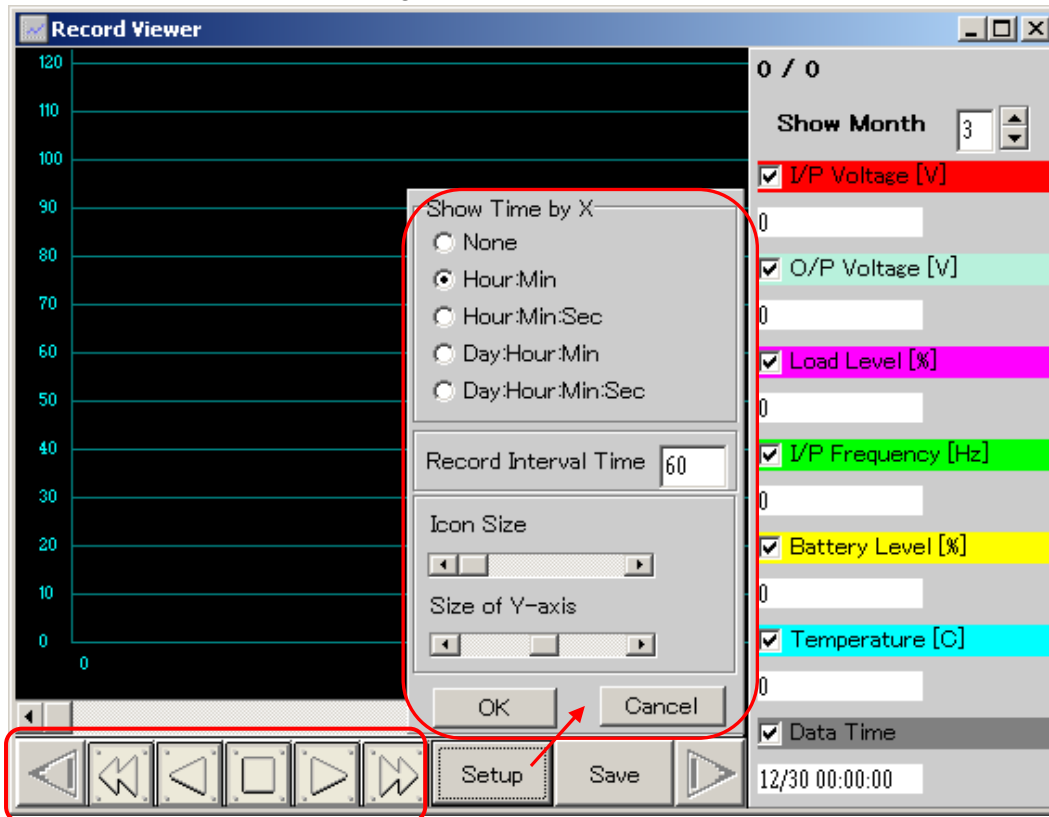
Recording enable/disable is available for the following data:

1. Input Voltage (in Volts)
2. Output Voltage (in Volts)
3. Load Level (in Percent)
4. Input Frequency (in Hertz)
5. Battery Level (in Percent)
6. Temperature (in degrees Centigrade)
7. Data Timestamp (Format: M/D hh:mm:ss)

The Setup button at the bottom of the Record Viewer window permits the selection of:

- i. Timestamp format displayed along the X-axis.
- ii. The data sample record time interval.
- iii. The displayed icon size.
- iv. Y-axis display size.

Fig. 11 – Record Viewer.



The Toolbar along the bottom of the Record Viewer also contains control buttons that allow the user to advance or reverse through the displayed data.

2. The *Event View* displays data from the UPS event log.

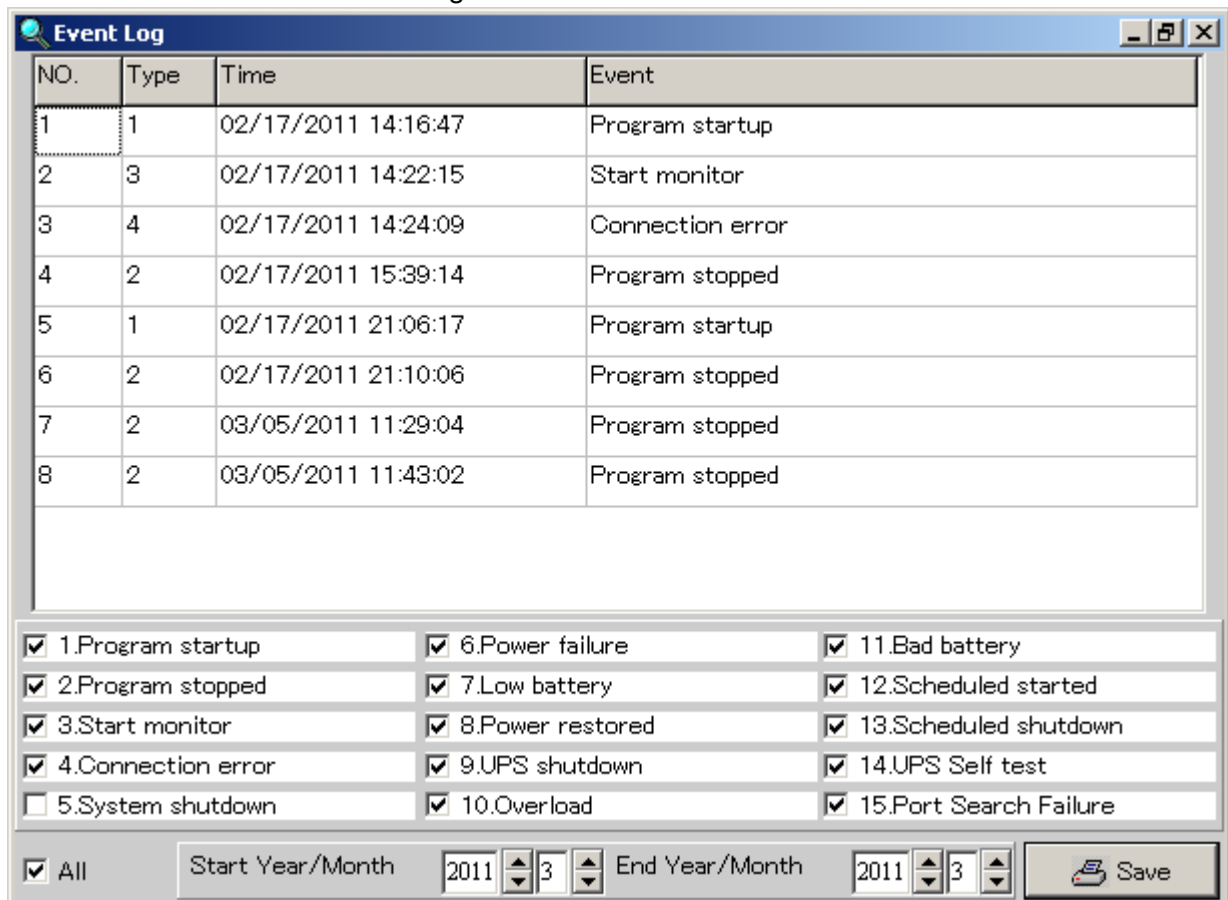
There are *fifteen* events that can be enabled/disabled.

ALL events can be selected for display, or a range of events can be specified via a Starting year and month and an Ending year and month.

Displayable events are:

- | | | |
|---------------------|-------------------|-------------------------|
| 1. Program Startup | 6. Power Failure | 11. Bad Battery |
| 2. Program Stopped | 7. Low Battery | 12. Scheduled Startup |
| 3. Start Monitor | 8. Power Restored | 13. Scheduled Shutdown |
| 4. Connection Error | 9. UPS Shutdown | 14. Self Test |
| 5. System Shutdown | 10. Overload | 15. Port Search Failure |

Fig. 12 – Event Viewer



Events displayed in the Event Viewer window are sequenced top to bottom in the order of their occurrence with: event number, the type number, the date/timestamp and the event name.

D. Help - the Help menu contains the a link to the UPSMon ReadMe document

The ReadMe document is an HTML file that is store in the default UPSMon install directory. The typical directory path to the ReadMe on a Windows machine in the U.S. is: *C:\Program Files\UPSMON\Help\ReadmeE\ReadMeE.htm*

The *C:\Program Files\UPSMON\Help* directory contains folders for 11 other languages with a ReadMe doc in each language.

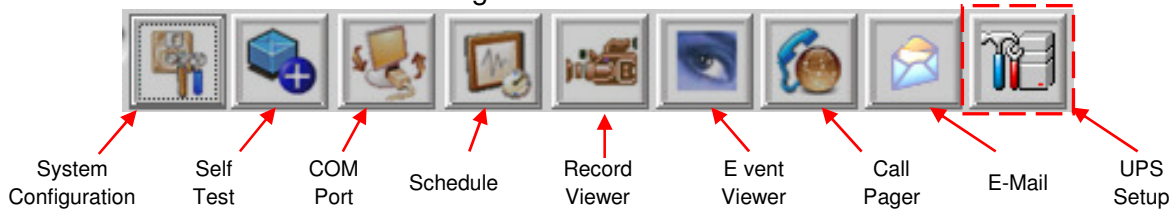
The ReadMe document contains more information about:

- Using the UPSMON-Plus Monitoring Software
- Opening the UPSMON-Plus UPS Monitoring software
- UPSMON-Plus buttons and indicators
- Setting up the UPSMON-Plus configuration
- Configuring the E-mail notification feature
- Checking the Event List and Event Graph
- Scheduling UPSMON-Plus events
- UPSMON-Plus self test
- UPSMON-Plus Green Mode
- UPSMon messages
- Setting up the PC BIOS to enable PC startup

2 The Tool Bar:

The UPSMon version 2.89m3 has nine buttons in the tool bar located near the top of the Main page:

Fig. 13 – The Tool Bar.



These buttons repeat several of the menu items described in 1 section above. Refer to that section for descriptions of the functions of the following buttons:

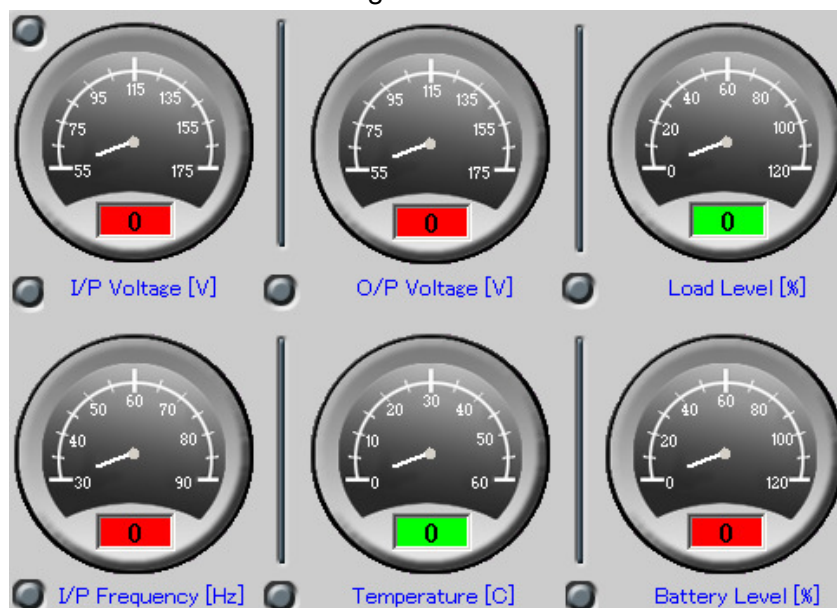
- System Configuration [Section 1-A-1]
- Self Test [Section 1-A-2]
- COM Port [Section 1-B-1]
- Schedule [Section 1-B-2]
- Record Viewer [Section 1-C-1]
- Event Viewer [Section 1-C-2]
- Call Pager [Section 1-B-3]
- E-Mail [Section 1-B-4]
- UPS Setup [Section 1-B-5] (Button appears when a Vault UPS is connected to PC.)

3 The Meters:

The Meters display provides scaled and numeric readings for each of the following items:

- Input Voltage, (in Volts)
- Output Voltage, (in Volts)
- Load Level, (in percentage)
- Input Frequency, (in Hertz)
- Temperature, (in degrees Centigrade)
- Battery Level, (in percentage)

Fig. 14 – The Meters.



4

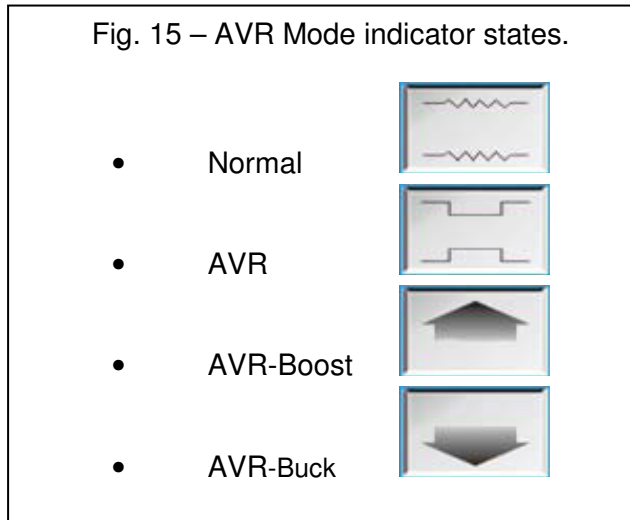
UPS Status Indicators:

Three UPS status indicators are located along the right-side of the Main page:

- AVR Mode
- Line State
- UPS State

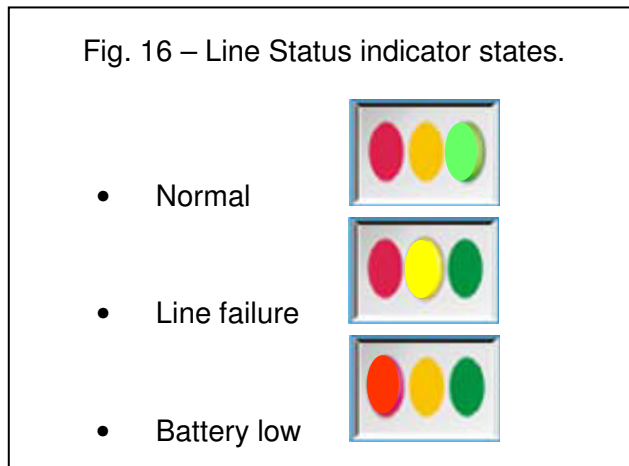
1. AVR (Automatic Voltage Regulator) Mode:

The AVR Mode indicator can display four different states, as shown in Figure 15:



2. Line State:




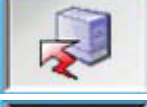
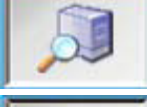

Indicates the current state of the power source, as shown in Figure 16:



3. UPS State:

Indicates one of five current UPS states, as shown in Figure 17:

Fig. 17 – UPS Status indicator states.

- Normal 
- UPS fault 
- Battery fault 
- Over load 
- UPS test 
- UPS off 

5 Scheduled Shutdown Indicators:

The “*UPS Down Time*” and the “*UPS Up Time*” indicators are located on the lower-right side of the Main page.

When a UPS shutdown and restart is configured using the procedure in Section 1-B-2 above, these indicators will display the shutdown and restart times:

Fig. 18 – The Scheduled Shutdown indicators.

Next Scheduled Shutdown:

Indicates UPS when the next scheduled shutdown is set to occur.

UPS Down Time
2007/09/14
12 : 00

Next Scheduled Start up:

Indicates UPS when the next scheduled start up is set to occur.

UPS Start Time
2007/09/14
13 : 30

